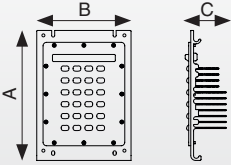


Universal and smart lighting with the highest efficiency in the market and point to point remote control with PLC integrated in the driver. Meet the standards and increases the savings up to 85% in regards to the conventional technology.

	PRAGMA XPG3	PRAGMA 3030
Material	Aluminum	Aluminum
Protection Grade	IP66 / IK08	IP65 / IK08
Lenses	150x60°	140x68°
Work temperature	-40...+50	-40...+50
Power factor ⁽¹⁾	0,95	0,95
CCT	4000K	3000 / 4000K



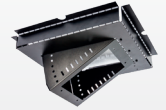
Module AIRIS PRAGMA XPG3



Module AIRIS 3030



Installation plate (0°-30° inclination) RTCPIBRI



Installation plate (0°-30° inclination) VTCPID



SIGNUM URBAN FASIGA



SIGNUM PESCADOR FAPES02



SIGNUM FERNANDINA FAFER01



SIGNUM VILLA FAVILC



SIGNUM URBAN 2 FASIG02



SIGNUM NEO FANEO



	Type	Maximum consumption (W) ⁽²⁾	Dimensions Ax B (mm)	Weight (g)	Input voltage (V)	DC Voltage (V)	Current entry (mA)	Luminous flux (lm) ⁽²⁾	Efficiency (lm/W) ⁽²⁾
Module LED	24 LED XPG3	58	182x135x58	750	100-277	32-37	750	7000	121
	63 LED 3030	60	135x135x45	690	100-277	40-45	140	7500	125
SIGNUM VILLA ⁽³⁾	24 LED XPG3	58	440x440x770	6860	100-277	32-37	750	5670	98
	63 LED 3030	60	440x440x770	6800	100-277	40-45	140	6060	101
SIGNUM FERNANDINA ⁽³⁾	24 LED XPG3	58	Ø520x860	7260	100-277	32-37	750	5510	95
	63 LED 3030	60	Ø520x860	7200	100-277	40-45	140	5880	98
SIGNUM URBAN ⁽³⁾	24 LED XPG3	58	Ø485x170	5860	100-277	32-37	750	6670	115
	63 LED 3030	60	Ø485x170	5800	100-277	40-45	140	7140	119
SIGNUM URBAN 2 ⁽³⁾	24 LED XPG3	58	Ø485x695	7360	100-277	32-37	750	6610	114
	63 LED 3030	60	Ø485x695	7300	100-277	40-45	140	7080	118
SIGNUM PESCADOR ⁽³⁾	24 LED XPG3	58	Ø585x330	5860	100-277	32-37	750	6670	115
	63 LED 3030	60	Ø585x330	5800	100-277	40-45	140	7140	119
SIGNUM NEO ⁽³⁾	24 LED XPG3	58	Ø450x600	4060	100-277	32-37	750	5915	102
	63 LED 3030	60	Ø450x600	4000	100-277	40-45	140	6300	105
Accessories	VTCPID	Adjustable installation plate (0-30 °) for Villa type luminaires							
	RTCPIBRI	Adjustable installation plate (0-30 °) for Fernandina luminaires							
	SPDV22	Surge protector 10KV / 5KA							
Sensor	Motion sensor and vehicle light measurement								

Using the KITCCE adapter (see page 5) you can have modules with variable color from 2200K to 5800K.

(1) Data ± 5%

(2) Data ± 10%. The consumption includes the consumption of the F.A.

(3) These models include surge protector (SPDV22) and adapter plate. Check other colors